



Ord.-No.: 8092365X

ORI Mini Module

The easy way to take samples even inside Ex-zones

Optionally, the sampling module starts a predefined sampling sequence (pre-programmed by the user) via a potential-free contact (button or switch), via RS485 (Modbus) or by connecting to a multi-parameter data logger such as the ORI Mlog or ORI NEMO T.

With the help of the ORI Mini Manager software, a sampling sequence for the ORI Mini is defined and stored (duration, sampling interval, dosing volume...).

manageable
lightweight



II 3G IIB T4 Gb

zone 2





II 2G IIB T4 Gb

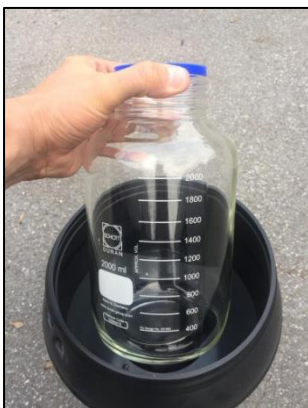
zone 1

Features

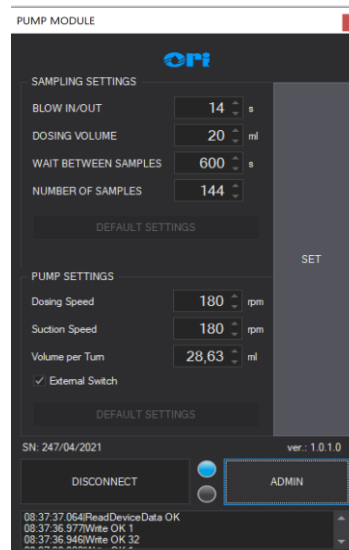
- As non Ex, ATEX Zone 2 or ATEX Zone 1 version available
- Lightweight! Only 5.2 kg for easy transport (with battery + 15 l collection container)
- Programmable sampling function with ORI Mini Manager software for Windows
- Start by potential-free contact, e.g. push-button
- Start by ORI Mlog or NEMO T for measurement parameters such as: **pH, ORP, Temp., Conductivity, O2**, Ideal for event start.
- Different battery types and capacities
ATEX zone 1 - NiMH 20Ah
ATEX zone 2 – Li-ions 3.7 Ah,
non Ex - Li ions 3.4 Ah.

Technical Data: ORI Mini Module (mobile sampler)

ATEX Motor	 II 2G  II 3G	Ex db [ib] IIB T4 Gb Ex db [ib] IIB T4 Gb	
Norm	EN IEC 60079-0:2018		
Degree of protection	IP 65		
Electrical data	Battery non Ex Battery Zone 2 Battery Zone 1	Li Ionen, 14,8 V DC / 3.4 Ah / 50.32Wh non Ex Li Ionen, 12 V DC / 3,7 NiMH, 12 V DC / 20 Ah / 240 Wh	Sicherung 3A Sicherung T 6.3 A
Dimension (Ø x H) in mm / weight in kg	15 l. HDPE-container (ØXH)	270 x 550(590) 4.9 kg without battery and glass bottle 5.2 kg with Li Ion battery non EX 10.5 kg with Powerbox 10 Ah  ATEX Zone 1 14.5 kg with Powerbox 20 Ah  ATEX Zone 1	
Sampling principle	Peristaltic pump		
Sample container	15l HDPE composite container, 2l borosilicate glass bottle (others on request)		
Wetted material	Suction hose Hose coupling Suction piece Bottle	PVC PA V2A (1.4305/AISI303) optional V4A (1.4571/ASIS 316 Ti) HDPE or borosilicate glass	Pump hose Silicon (various materials on request)
Suction hose	Ø (di) 9 mm Length 20 m	(special versions are available on request) (special versions are available on request)	
Suction height	Max. 6 m		
Dosing volume	Up to 15000 ml, depending on the duration of the relevant signal		
Temperature	Operation temperature Max. ambient temperature	0°C – +40°C -20°C - +50°C	



Sample container made of borosilicate glass



Presented by:



Technical changes and errors excepted.

EX-version of the sampling module, installed in the manhole