



 II 2G IIB T4

Ord.-No.: 8092365X

# Sampling Modul

## Remote sampling even within Ex zone I

The sampling module starts a sample or a sample sequence (like a qualified sample) via a potential-free contact (e.g. push-button), via RS485 or is triggered by the connected multiparameter data logger Mlog.

When triggered by a button, the duration of the button press determines the filling time of the container. When triggered by the ORI Mlog Z1/Z2 or ORI NEMO T, the filling time is controlled by the Mlog or NEMO T.

compact  
manageable



event-  
proportional







## Features

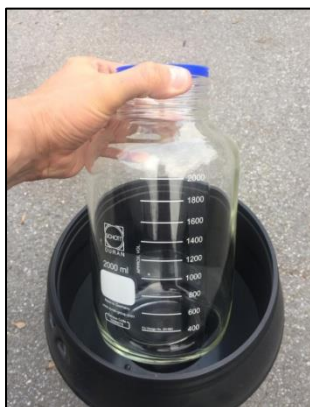


II 2G IIB T4 Gb *Zone 1*

- Light and compact
- Available with ATEX marking (No.: 8092365) and as Non ATEX (No.: 8092365K)
- Lightweight! Only 5.2 kg for easy transport (with battery + 15 l collection container); 10.5 kg with 10 Ah battery
- Various start options
- Start by ORI Mlog or NEMO T for measurement parameters such as: **pH, ORP, Temp., Conductivity, O<sub>2</sub>**, Ideal for event start.
- Start by potential-free contact, e.g. push-button
- Start by signal via RS485 bus
- Different battery types and capacities  
NiMH 20Ah, non Ex Li ions 3.4 Ah.
- **Maintenance-friendly**

## Technical Data: ORI PumpModul (mobile sampler for event proportional sampling)

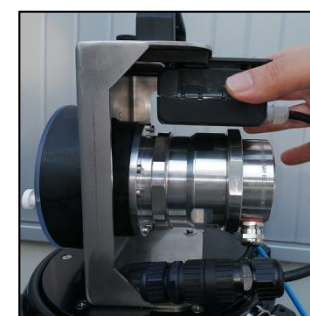
ATEX Motor	 II 2G	Ex db [ib] IIB T4 Gb		
Norm	EN IEC 60079-0:2018			
Degree of protection	IP 65			
Electrical data				
Ord.-No. 8092365K	Battery	Li Ion, 14,8 V DC / 3.4 Ah / 50.32Wh non Ex		Fuse 3A
Ord.-No. 8092365 	Battery	NiMH, 12 V DC / 20 Ah / 240 Wh		Fuse T 6.3 A
Dimension (Ø x H) in mm / weight in kg	15 l. HDPE-container (ØXH)	270 x 550(590)	4.9 kg without battery and glass bottle 5.2 kg with Li Ion battery <b>non EX</b> 10.5 kg with Powerbox 10 Ah  14.5 kg with Powerbox 20 Ah 	
Probenahmeprinzip	Peristaltic pump			
Sample container	15l HDPE composite container, 2l borosilicate glass bottle (others on request)			
Wetted material	Suction hose	PVC	Pump hose	Silicon ( various materials on request )
	Hose coupling	PA		
	Suction piece	V2A (1.4305/AISI303) optional V4A (1.4571/ASIS 316 Ti)		
	Bottle	HDPE or borosilicate glass		
Suction hose	Ø (di)	9 mm	( special versions are available on request )	
	Length	20 m	( special versions are available on request )	
Suction height	6 m			
Dosing volume	Up to 15000 ml, depending on the duration of the relevant signal			
Temperature	Operation temperature	0°C – +40°C		
	Max. ambient temperature	-20°C - +50°C		



Sample container made of borosilicate glass



EX-version of the sampling module, installed in the manhole



Sampling module in the non Ex version with small Li-Ion rechargeable battery

Presented by: